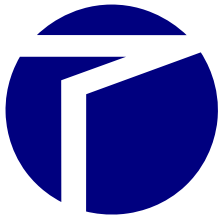




# CDVI

Security to Access



# DIGIWAY

DOOR AUTOMATION

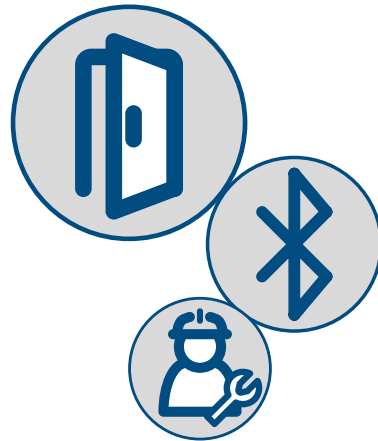
[www.cdvi.co.uk](http://www.cdvi.co.uk)

DIGIWAY provides a universal door automation solution for swing doors. Whether doors are single or double, internal or external, DIGIWAY is reliable, discreet, and safe. With a built-in radio frequency receiver and clear LCD screen, all parameters can be quickly and easily programmed. DIGIWAY is designed to make installation simple for a variety of automation projects.

For end users, DIGIWAY is a reliable, durable, aesthetic solution. Along with improving mobility and accessibility, door automation enhances security and promotes better hygiene. Your project might be a residential care home needing better wheelchair access, or a busy school managing regular surges of traffic. DIGIWAY is an effective solution for a huge range of swing doors.

## Door automation solutions

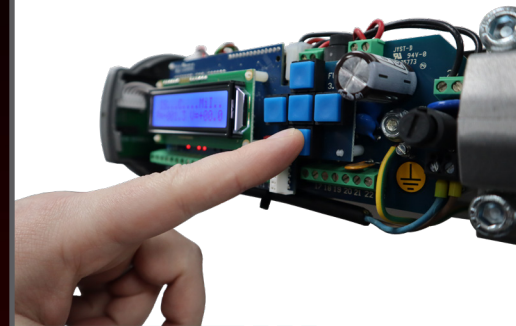
- FREE in-depth installer training with CDVI Academy
- Up to 225,000 opens a year for moderate to intensive use
- Motor-driven or spring return door operators
- Optional Bluetooth module for pairing free programming app



## DIGIWAY Spring Return

Fire tested under EN1634-1 (60 mins)

The DIGIWAY SR door operator is certified to withstand fire for up to 60 minutes under the EN1634-1 standard. The operator can also be easily connected to fire signals to automatically respond in an emergency. The door can be set to lock, unlock, close, or swing freely in the event of a fire.



## Better buildings for all

- No cables on either side for a sleek aesthetic solution
- Compact electric motor for quiet, discreet operation
- Improved security with access control integration
- Better accessibility for people with reduced mobility
- Built-in radio receiver for seamless & wireless activation

## Which DIGIWAY is right for your project?

There are two models of the DIGIWAY door operator: the Plus and the SR. The Plus is electro-mechanically driven and designed for improving accessibility in areas with generally lower levels of traffic. It's ideal for private residences or care homes. Meanwhile, the SR is assisted by a chain-driven spring return mechanism. This makes it suited for sites with higher traffic and larger, heavier doors.

	DIGIWAY PLUS	DIGIWAY SR
<b>Max Door Weight*</b>	120kg	200kg
<b>Max Door Width*</b>	1.2m	1.5m
<b>Power</b>	50 W	100 W
<b>Dimensions</b>	511 x 90 x 110	685 x 90 x 110
<b>Lock Power Input</b>	12Vdc-1A	12Vdc-1A / 24Vdc-0.5A
<b>Fire Input</b>	Power 24-48 Vdc	NC Contact
<b>Semi-Automatic Mode</b>	-	Yes
<b>Battery Failover</b>	Yes	-
<b>Spring Return</b>	-	Yes
<b>Software-Assisted Setup</b>	-	Yes
<b>Fire-Tested</b>	-	Yes
<b>Recommended Usage</b>	Private use, fully automated	Public use, main doors, automated and manual

## Easy Bluetooth programming

Both DIGIWAY door operators can be ordered with an optional built-in Bluetooth module.

The free DIGIWAY BLE smartphone app mirrors the readout of the LCD screen on the operator. All settings and parameters can be configured from your phone. No need to remove the operator cover!



## What EN16005 covers

The factors covered by the EN16005 regulations include (but are not limited to): safety signage, emergency provisions, safety barriers, and sensors. All these measures are designed to reduce the risk of injury for those using the automatic door. All users must be considered, including able-bodied adults, wheelchair users, less mobile people, and children.

## Safety sensors

Safety sensors are a key part of meeting EN16005 regulations. As well as allowing users to trigger the door to open upon approaching it, they also protect users from harm. If a person or part of a person enters a zone where they could be injured by the motion of the door, sensors detect this and immediately stop the door. Sensors might use microwave, infrared, or laser technology to scan the areas of potential danger. Finger-guards should also be used along the hinge line.



DIGIWAY kits are designed to make it easy to comply with EN16005 regulations. The kits include the DIGIWAY door operator, safety sensors, finger-guards, and safety signage. Other components may be needed to comply with the regulations, depending on the site and requirements of the project.



-  DIGIWAY Plus or DIGIWAY SR door operator(s)
-  One or two door operators for single or double doors
-  Infrared safety sensors to detect approaching people
-  Black or white finger-guards to protect the door's hinge line
-  Safety signage to notify users of the automated door



2  
YEAR  
WARRANTY

Combine ease of use with reliable operation

Built-in receiver to create complete entry solutions

Free CDVI Academy training

Backed by a robust 2-year warranty

Suitable for people with reduced mobility

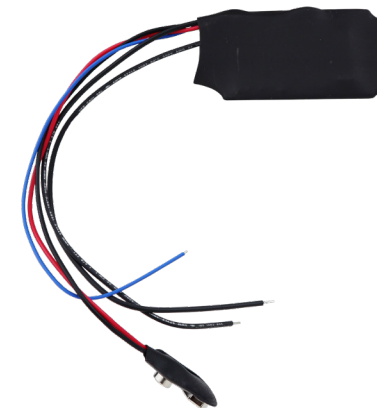


## DWCP

- DIGIWAY external control panel
- Hard-wired directly to the door operator
- Convenient way to set door modes
- Easily switch between day and night mode
- Visual indication with LEDs

## RTE-AIR & RTE-CIR

- Touchless activation trigger devices
- Adjustable infrared detection range
- Visual feedback with 2-colour LEDs
- Compact, surface mount design
- Robust IP ratings for indoor or outdoor installation



## TX26-MC1 transmitter

- Universal 1-channel transmitter
- Ideal for making exit buttons and infrared devices wireless
- Turns standard contacts into radio frequency signals
- Up to 1000m range in open field
- Open connections (push-to-make)
- Perfect when cabling is difficult



# CDVI

Security to Access

**Also available from CDVI:**



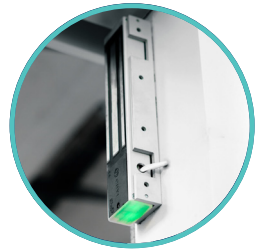
**Intelligent  
Biometric  
Solutions**



**Powerful  
Video  
Entry**



**Innovative  
Access  
Control**



**Robust  
Secure  
Locking**

**CDVI Ltd**

Unit B1, Knaves Bech Business Centre

Davies Way

Loudwater, High Wycombe

HP10 9QR

**+ [44] (0) 1628 531 300**

**sales@cdvi.co.uk**

[www.cdvi.co.uk](http://www.cdvi.co.uk)

**Sign up to our  
newsletter!**



Every effort is made to ensure all information in this document is correct at the time of publication, but it is offered without any guarantee and/or liability for completeness or correctness. Any information or images could be perceptibly different and we reserve the right to adjust, remove, or replace information or images without prior notice.

Date of Publication: 06 Jun 2024